

Installation of CSA Hardlock (HL 2.0)

CSA uses a USB dongle as a system authorization key (“Hardlock”) to ensure only the authorized user(s) of can run the CSA program. It counts the number of concurrent users in CSA and keeps track of it. CSA cannot be executed without the Hardlock.

Single-user license –

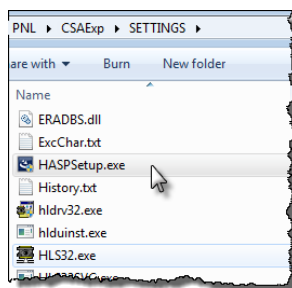
It must be plugged to the computer intended to use the CSA program

Network-user license –

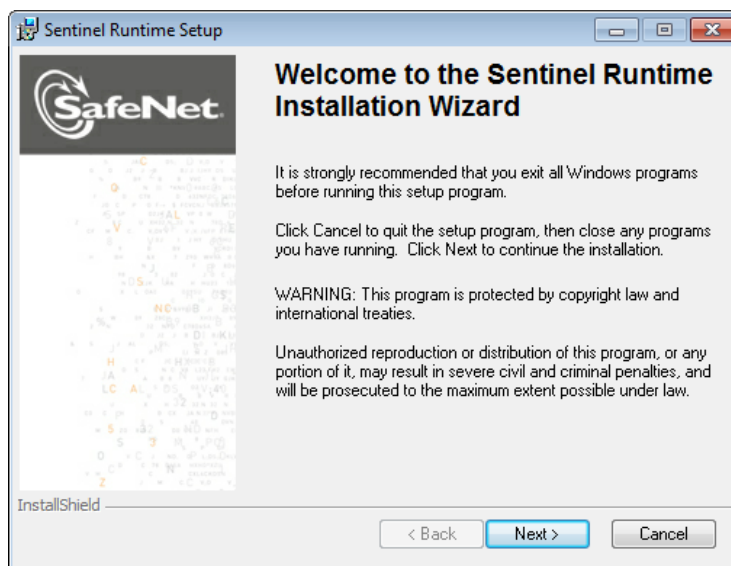
Only one hardlock is required. It can be plugged to network server or any of its workstations which is accessible via TCP/IP.

1. Setup CSA Hardlock

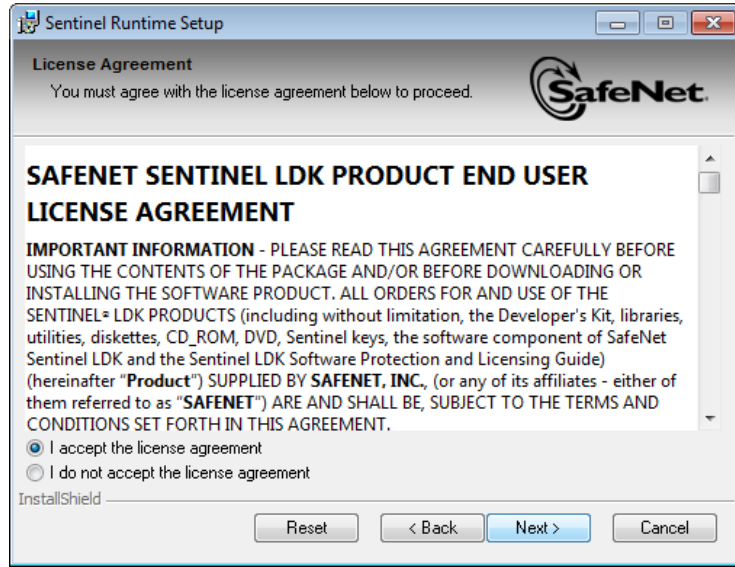
- a. Go to “..\PNL\CSAEXP\SETTINGS” and double-click “HASPSSetup.exe”



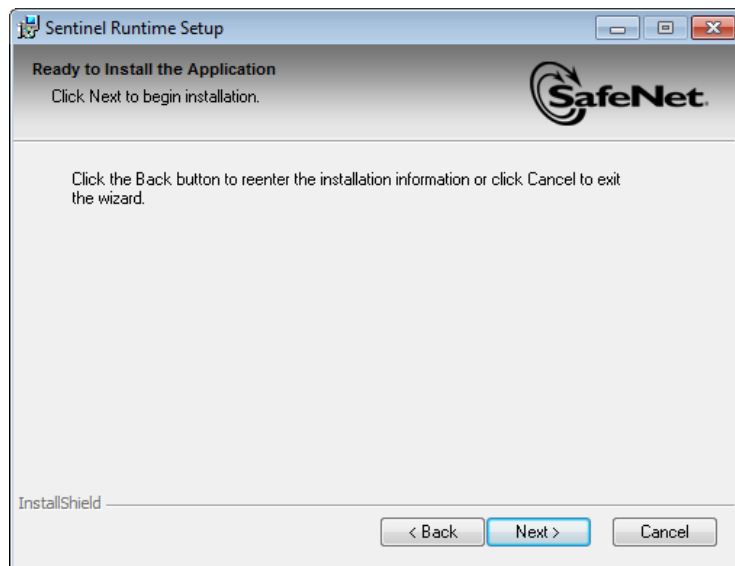
- b. Click [Next >] to start the installation wizard



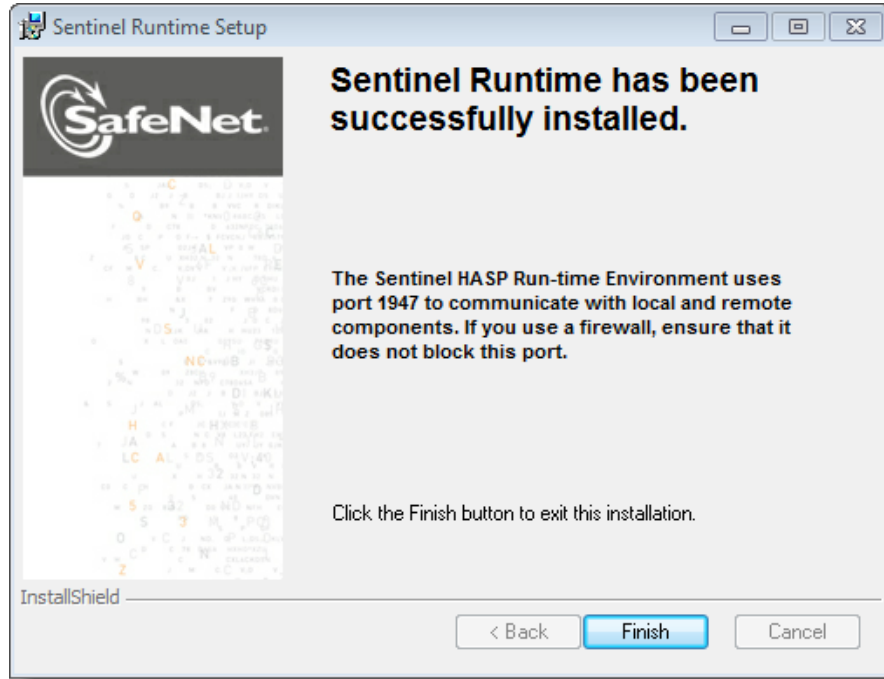
- c. Select “I agree the license agreement” and click [Next >]



- d. Click [Next >] to start the installation



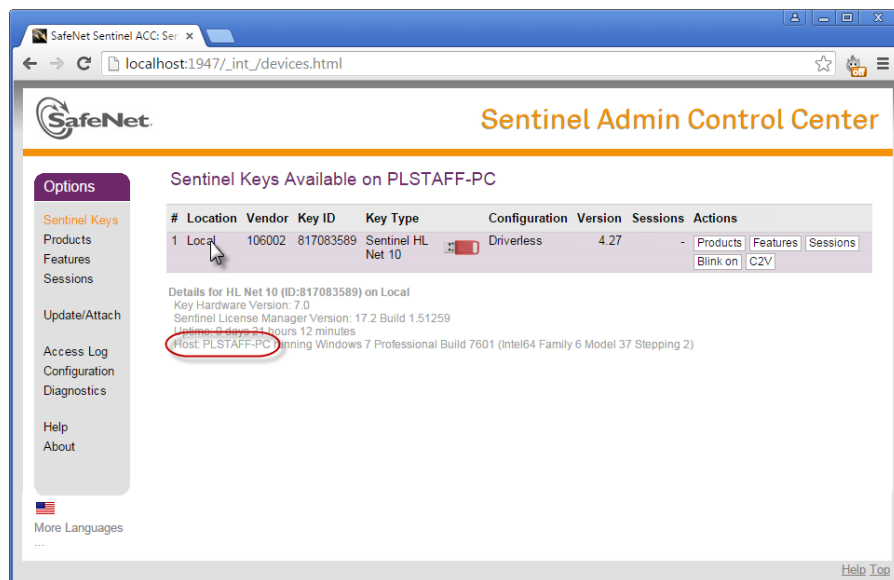
- e. When the installation finished, click [Finish] to exit the installation program.



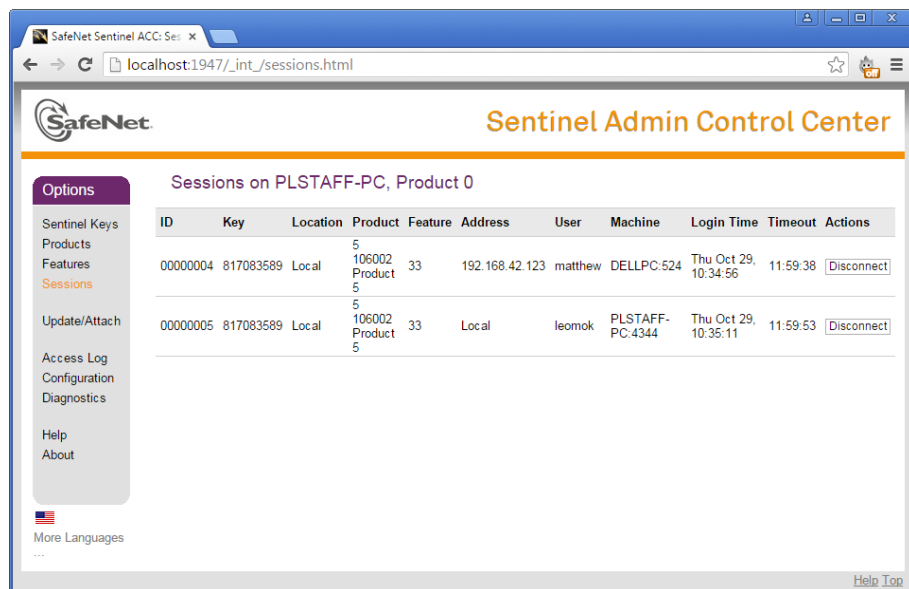
2. Hardlock Administration Page

HL-Server Administration (<https://localhost:1947>) is a utility for managing Hardlock Server. Its webpage will show you how many users can access the CSA program and how many users are using it.

- (1) On the menu, select "Sentinel", it shows you if the Hardlock which is plugged on your network. Move the pointer over "Local", then it shows you which computer is plugged with the Hardlock.



- (2) On the menu, select “Sessions”, it shows you the workstations that are running CSA.



3. Setting of Hardlock Location

- a. Open “..\PNL\CSAExp\SETTINGS\CSAExp.ini” with text editor
- b. Under the section [LDK], enter the IP address and the computer name of the computer with the Hardlock. For example:

```
[LDK]  
ip=192.168.1.88  
hosts= PLSTAFF-PC
```