

CSA Expert Hardlock Relocation

Steps to relocate CSA Hardlock

1. Plug in the USB Hardlock to the new Hardlock server (i.e. the computer with the USB Hardlock)
2. Update configuration file
 - 2.1. Open "F:\PNL\CSAEXP\Settings\CSAEXP.ini" (support your CSA is in driver F:\)
 - 2.2. Change the IP Address or Computer Name of your Hardlock.
If you change your Hardlock from 1.0 (**Blue** or **Green** USB) to 2.0 (**Purple** or **Red** USB), replace the settings from Case 1 to Case 2.

Examples of settings for driver 1.0 and 2.0:

Case 1 – Driver 1.0

Example:

Hardlock 1.0

[HLSERVER]

1=[IP Address / Host Name of the Hardlock server]

2=

ADDRESS=

Case 2 – Driver 2.0

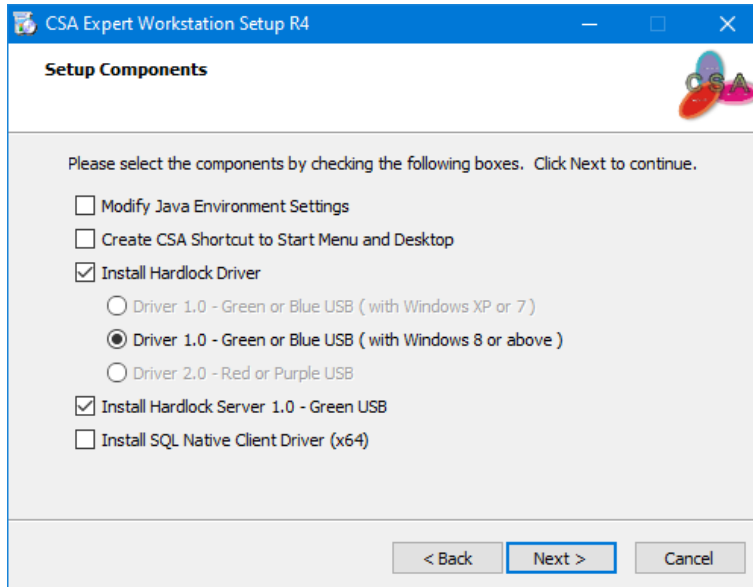
[LDK]

IP=[IP Address of the Hardlock server]

HOST=[Host Name of the Hardlock server]

3. At the Hardlock server, run "F:\PNL\CSAEXP\CSAExpStation.exe" (suppose your CSA is in driver F:\)
4. Select Hardlock driver to install
 - 4.1. Check the box(es) of the appropriate option(s) according to the following cases:
 - Case 1 -* If you are **single-user** and the USB Hardlock is **Blue**
 - Select "Driver 1.0"
 - Case 2 -* If you are **network-user** and the USB Hardlock is **Green**
 - Select "Driver 1.0" and "Install Hardlock Server 1.0"
 - Continue to do step 4.2 and 4.3
 - Case 3-* If your USB Hardlock is **Red** or **Purple**
 - Select "Driver 2.0"

CSA Expert Hardlock Relocation



4.2. Installation of Hardlock driver

(for network-user and the USB hardlock is green only)

4.2.1. It will install Hardlock Server first. Select “English” and click [Next] and [Install] to start the installation.

4.2.2. At the following prompt, click [No].




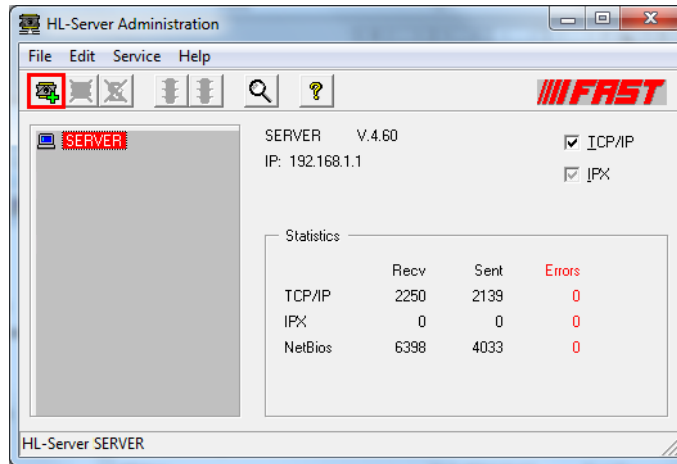
4.2.3. Then it will install Hardlock Driver:

- Case 1 - If you are using Windows XP or Windows 7
 - Keep clicking [Next] until the installation finished
- Case 2 - If you are using Windows 8 or 10
 - It will install automatically

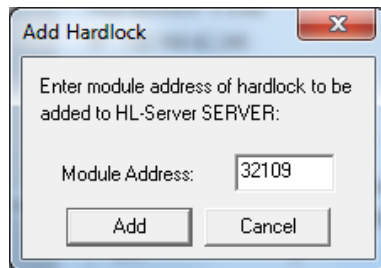
CSA Expert Hardlock Relocation

4.3. HL-Server Administration

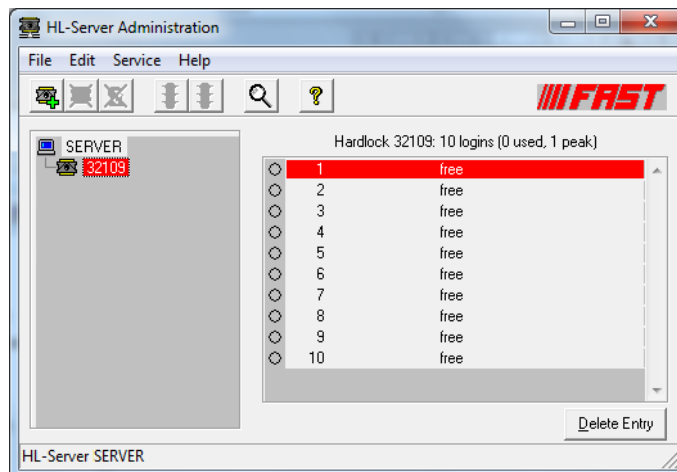
4.3.1. After installation of Hardlock driver, "HLSAdmin.exe" pops up. Select the Hardlock server and click the  button.



4.3.2. In Module Address, enter "32109" the click [Add].



4.3.3. The number 32109 is shown under your Hardlock server



CSA Expert Hardlock Relocation

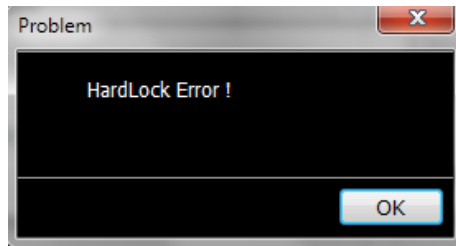
Troubleshooting of Hardlock Error

A) HardLock 1.0

1: HardLock Error !

Problem: The PC does not have hardlock driver.

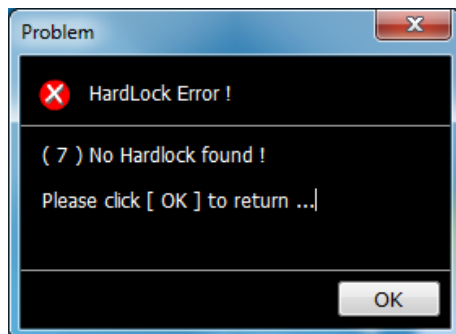
Solution: Run "CSAEXPSTATION.EXE" to install hardlock driver to this PC.



2: HardLock Error! (7) No Haedlock found

Problem: CSA cannot find hardlock device.

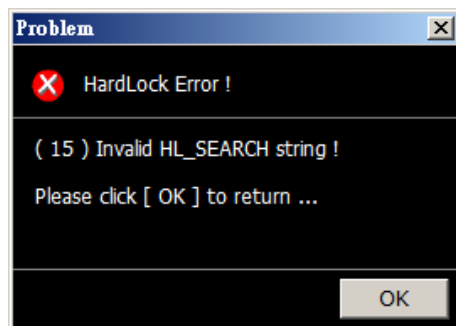
Solution: 1. Ensure the hardlock device is plugged into the hardlock server.
2. Ensure the IP address stated in "CSAEXP.INI" is correct.



3. HardLock Error! (15) Invalid HL_SEARCH string !

Problem: Hardlock driver is corrupted.

Solution: Run "CSAEXPSTATION.EXE" to re-install hardlock driver to this PC.



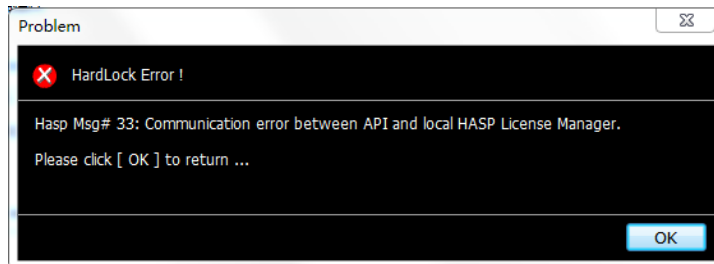
CSA Expert Hardlock Relocation

B) HardLock 2.0

1. Hasp Msg# 33: Communication error between API and local HASP License Manager.

Problem: Hardlock driver is corrupted or not properly installed.

Solution: Run "CSAEXPSTATION.EXE" to re-install hardlock driver to this PC.



2. Hasp Msg# 7: Sentinel HASP protection key not available.

Problem: CSA cannot find hardlock device.

Solution: 1. Ensure the hardlock device is plugged into the hardlock server.
2. Ensure the IP address stated in "CSAEXP.INI" is correct.

