




P & L Associates

CSA Professional Plus 4.2.7

Procedures for Frequent Update

(Applicable to both Single-user and Network licenses)

Important Notes

-  **DO NOT** update if you are **NOT** using CSA Professional Plus 3.1.4 or above
-  **DO NOT** update if your harddisk does not have at least 50Mb free space.
-  For security reason, please **BACKUP** all CSA related files before proceeding.

(1) Load the Update Program:

(a) Download Version

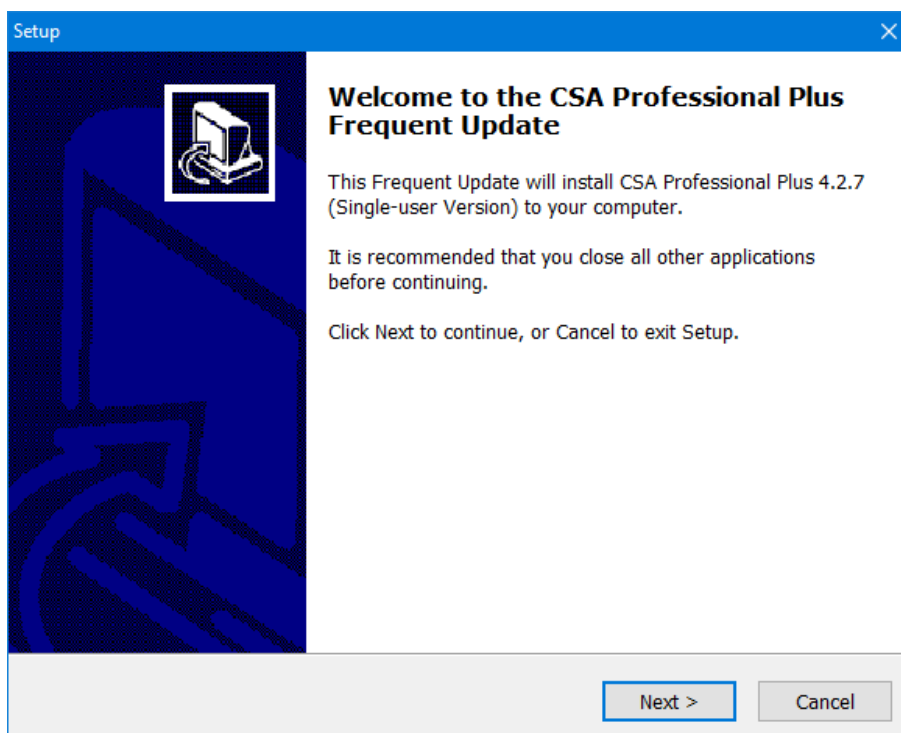
- At a user's PC, download the Update Program "PSET427.EXE" from our website at www.plsoft.com and save it to a temporary directory.
- Select: Start (開始) > Run (執行)
- Type: "C:\TEMP\PSET427.EXE", then click on [OK] / [確定].
(Suppose your temporary directory is C:\TEMP)

(b) CD-ROM Version

- Insert the CD-ROM into the CD-ROM drive to a user's PC. Select: Start (開始) > Run (執行)
- Type: "E:\PSET427.EXE", then click on [OK] / [確定].
(Suppose your CD-ROM drive is E:\)

(2) Welcome screen

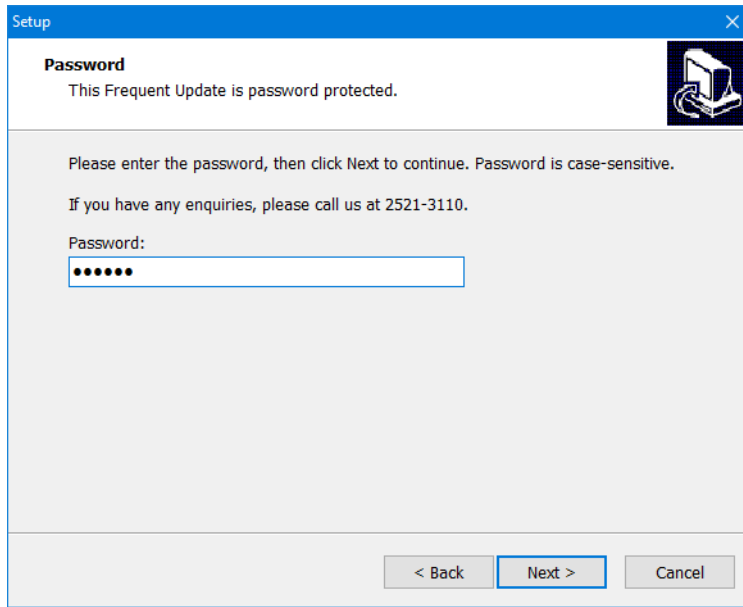
Click [**N**ext] at the Welcome Screen to start.



(3) Enter the Password:

Enter your Password as assigned in our update notice. Then click **[Next]**.

Note: If you lose your Password, please call us at 2521-3110 for assistance.



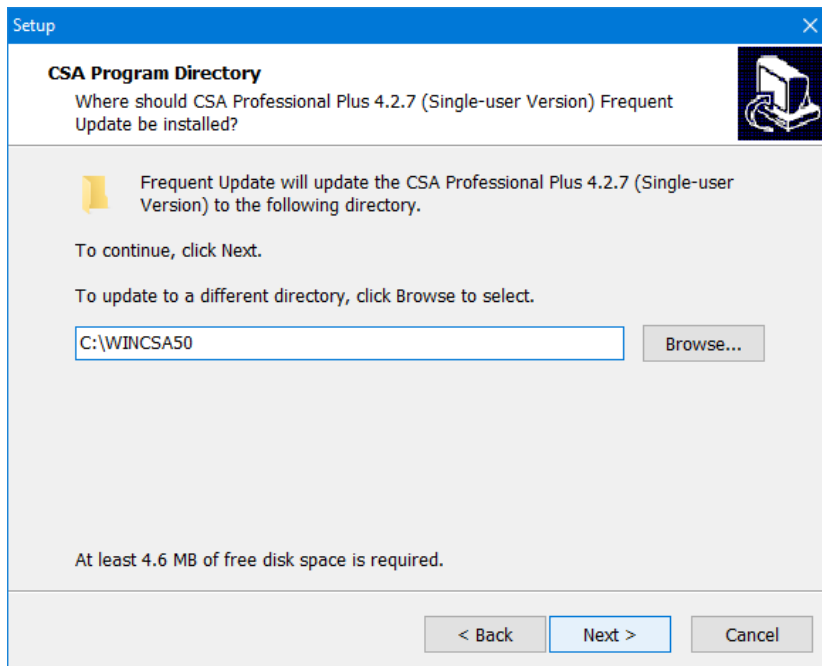
(4) Enter the CSA Program Directory:

Enter your CSA Program Directory. Then click **[Next]**.

Please enter **SHORT file name** in the CSA Program Directory and CSA Data Directory; otherwise, the data conversion (step 9) cannot be executed. You have to run it manually after this update.

Note: Typically “C:\WINCSA50” for most single-user licenses or “F:\WINCSA50” for most network licenses.

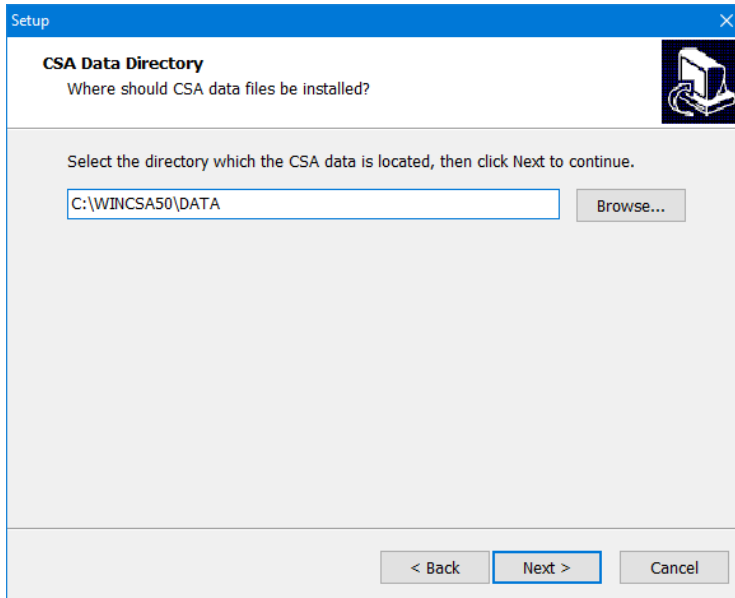
The update program will detect whether your program directory and your current CSA version are valid for the version 4.2.5 update. If you get such warning messages, please check your correct CSA program directory and ensure that your CSA program has already been updated to versions 3.1.4. or above.



(6) Enter the CSA Data Directory:

Enter your CSA Data Directory. Then click **[Next]**.

Note: Typically “C:\WINCSA50\DATA” for most single user licenses or “F:\WINCSA50\DATA” for most network licenses. If you don’t know the Data Directory, it can be found in CSA at: File > System Settings > General User’s Settings > CSA Data.

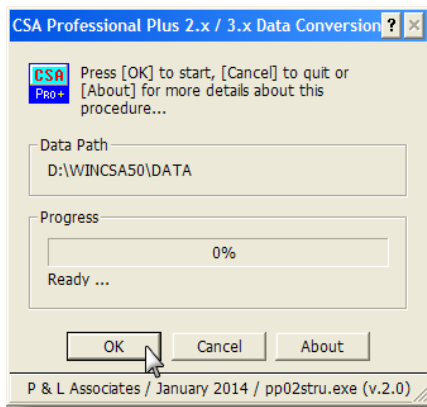


(7) Start to Update

Review the update options, click **[Install]** to start the Update Program.

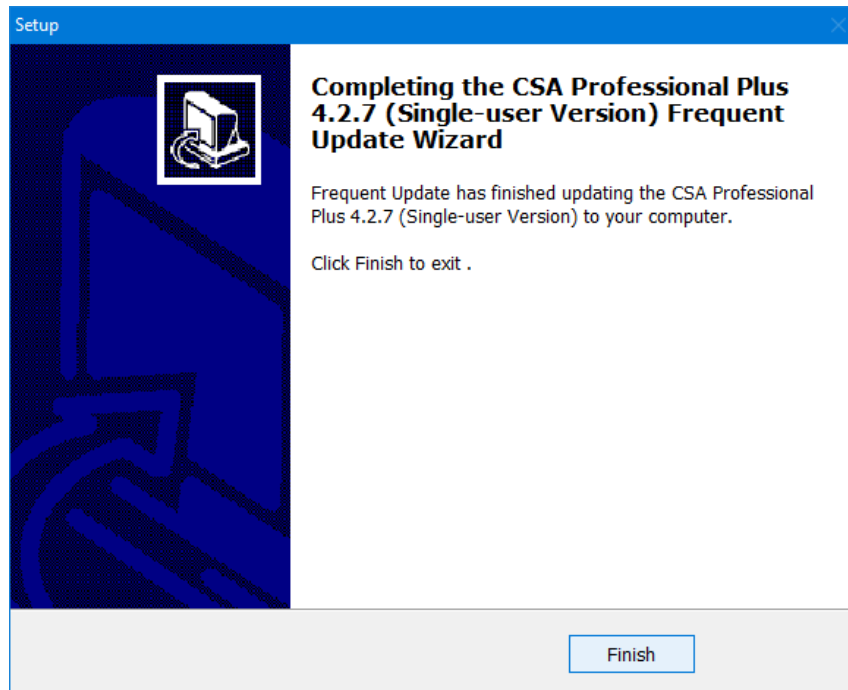
(8) Data Conversion

Click **[OK]** to start the process of Data Conversion.



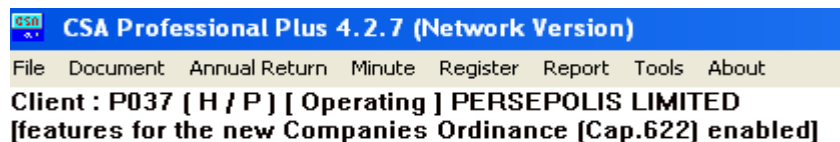
(9) Finish the Update Program

When all the update processes are completed, the following screen will be displayed. Click **[Finish]** to exit.



(10) Run and Check the Updated CSA Program:

Run the new CSA and check if the new version number – “CSA Professional Plus 4.2.7 (Single-user Version)” or “CSA Professional Plus 4.2.7 (Network Version)”, as the case may be, is displayed on the Title Bar of the CSA main screen.



Technical Issues:-

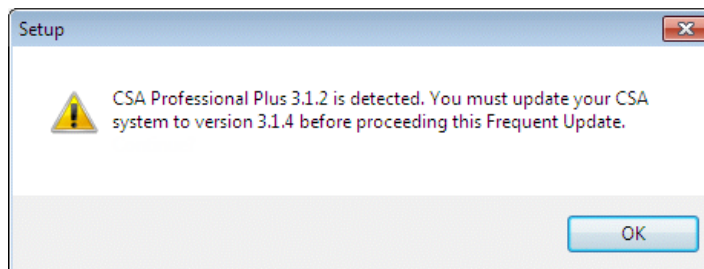
- **I have more than one datasets in use**
Execute the Data Conversion program (PP02STRU.EXE) manually for your other datasets. For example, if you CSA's program directory is “C:\WINCSA50”, the Data Conversion program is located at “C:\WINCSA50\CBACKUP\PP02STRU.EXE”.
- **The Data Conversion screen didn't pop up. Update program jumped to the Finish screen quickly**
Execute the Data Conversion program (PP02STRU.EXE) manually. If you CSA's program directory is “C:\WINCSA50”, the Data Conversion program is located at “C:\WINCSA50\CBACKUP\PP02STRU.EXE”.

Ensure that you enter the SHORT file name for the program and data directories in the “PP02STRU.EXE”. For example, you CSA is located at “F:\COMSEC SYSTEM\WINCSA50”, the short file name may be “F:\COMSEC~1\WINCSA50”. You may check the short file name at DOS-Prompt.

- **Error! Definition Missing! .../ DbFile.LST**

If you got an error message saying that the “DbFile.LST” was missing, it is most likely that your data directory is in long file name. Please refer to the above issue to run the Data Conversion program manually or call us for assistance.

- **Warning: old version is detected**



A version earlier than CSA Professional 3.1.4 is detected. You need to update your CSA to version 3.1.4 before updating it to version 4.2.7.

For any questions or support about this frequent update, please call us at 2521-3110 or E-mail to plinfo@plsoft.com.

*** END ***