

AML for CSA (1.1.0) Update Version 更新版 Procedure of Execution 執程序

Summaries of Update Procedures 更新程序摘要

1. Download update program and request password from P & L Associates website
請於 P & L Associates 網頁下載更新程式及索取用以執行該更新程式的密碼。
2. Run “AMLUpdate.exe” at a designated computer
於指定電腦執行 “AMLUpdate.exe” 。
 - a) update AML for CSA program
更新 AML for CSA 程式
 - b) update AML for CSA database
更新 AML for CSA 數據庫

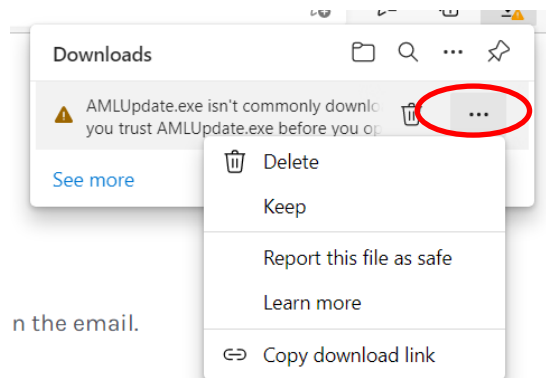
A. Download Update Program

下載更新程式

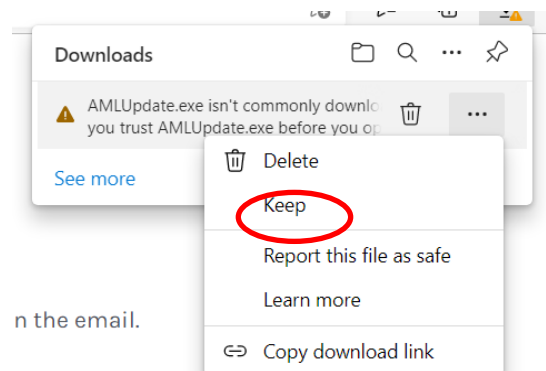
1. Visit our website <http://www.plsoft.com/program-update-aml-for-csa/> to download CSA Expert update program and request password for execution.
請於本公司網頁 <http://www.plsoft.com/program-update-aml-for-csa/> 下載更新程式及索取用以執行該更新程式的密碼。

If using Edge web browser to download the file, it prompts to keep this update file.
如使用 Edge 網頁瀏覽器來下載更新程式，便會因應下載程式而提出相關的處理方案

- Press “...” to show options
點擊 “...” 展示更多的選項

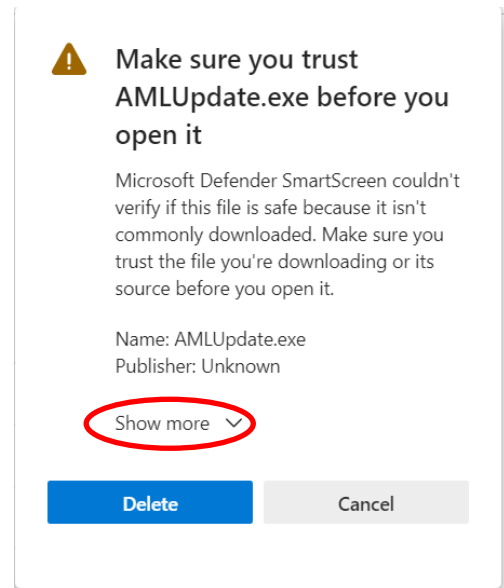


- Press “...” to show options
點擊 “...” 展示更多的選項

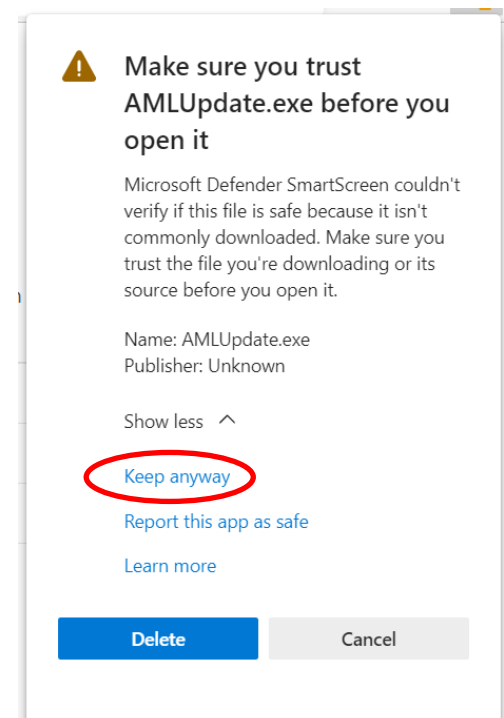


AML for CSA (1.1.0) Update Version 更新版 Procedure of Execution 執程序

- Press "Show More" combo box to display options
- 點擊 "Show More" 展示更多的選項



- Select "Save Anyway" to save update program to your local drive
- 點擊 "Keep Anyway" 來保留更新程式



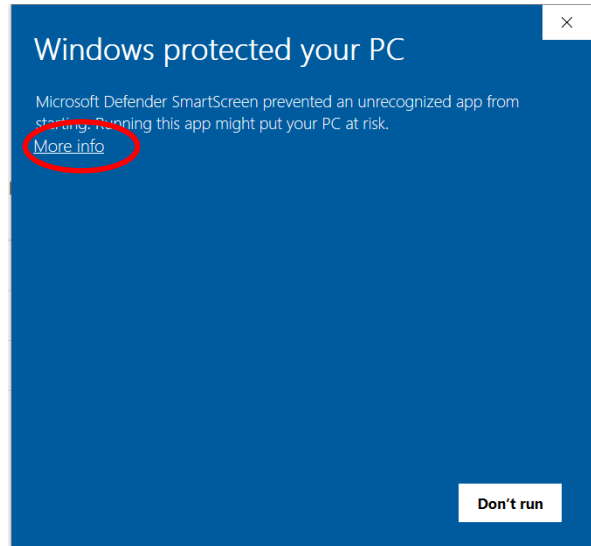
AML for CSA (1.1.0) Update Version 更新版 Procedure of Execution 執程序

2. Save the update file “AMLUpdate.exe” to a temporary location (e.g. “C:\TEMP”)
把下載的更新程式 “AMLUpdate.exe” 暫存於一個資料夾內(例如 “C:\TEMP”)。

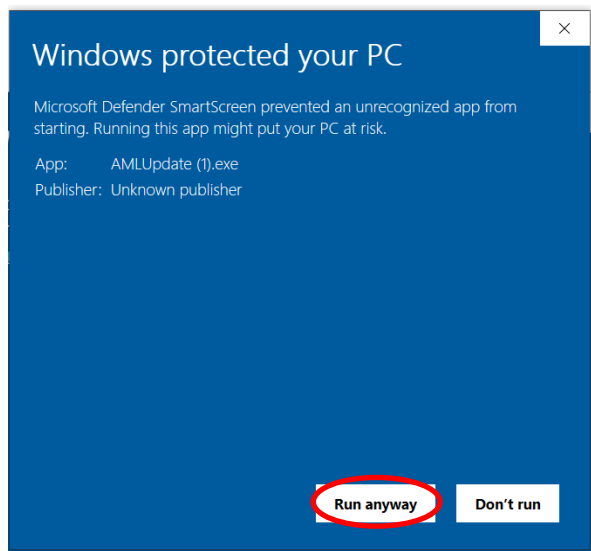
In Windows 10, you may need to confirm your execution.

在 Windows 10 執行更新程式會需要回應選項才可執行更新

- Press “More Info” to show next screen
- 點擊 “More Info” 展示更多的選項



- Press “Run Anyway” to start updating
- 點擊 “Run Anyway” 執行更新程式

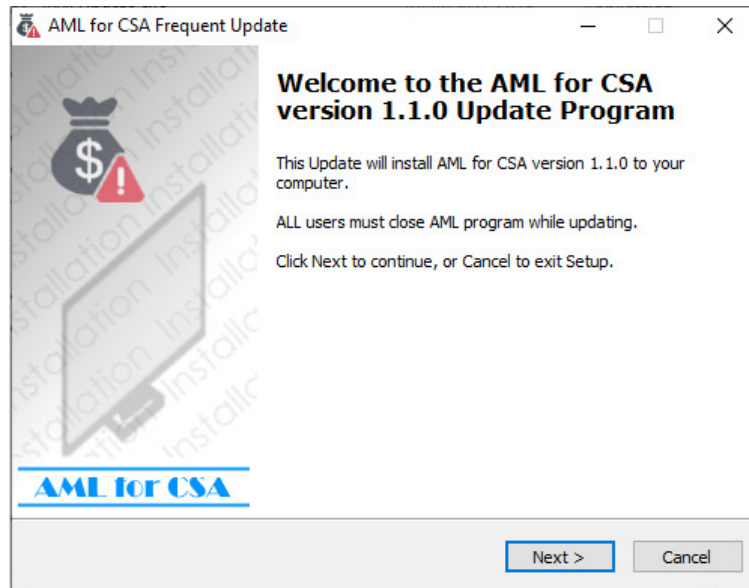


AML for CSA (1.1.0) Update Version 更新版 Procedure of Execution 執程序

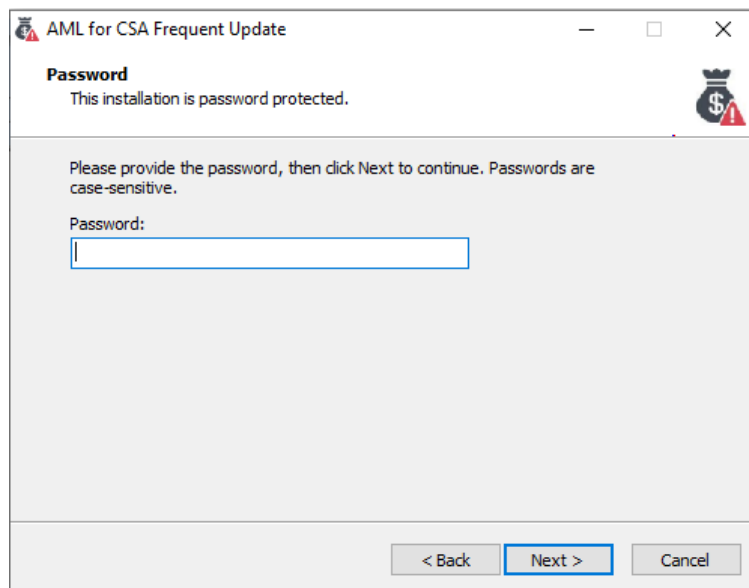
B. Execute Update Program

執行更新程式

1. On the Welcome screen, click [Next >]
在歡迎畫面上點擊 [Next >]

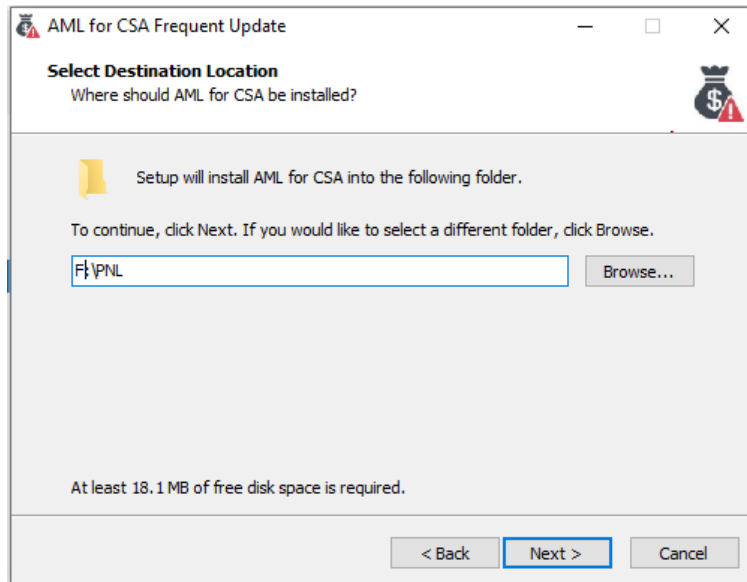


2. Enter your password
輸入密碼

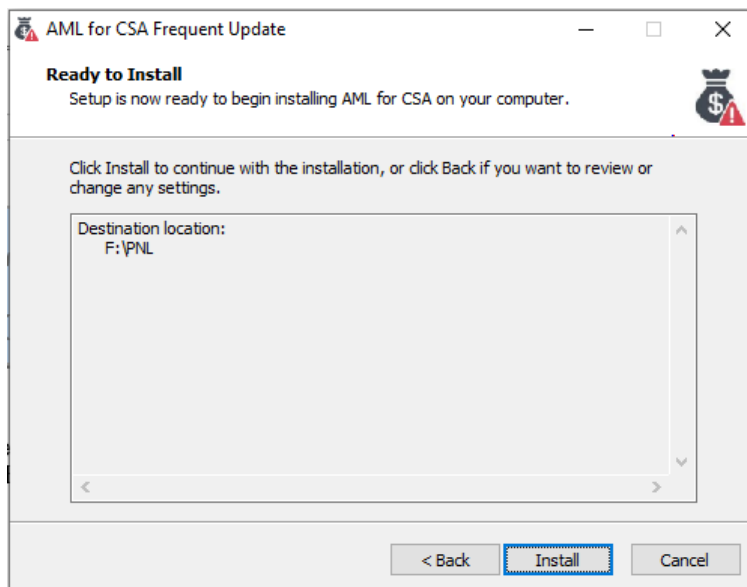


AML for CSA (1.1.0) Update Version 更新版 Procedure of Execution 執程序

3. Enter or browse the location of CSA Expert (e.g. "F:\PNL"), then click [Next >] to continue.
輸入或瀏覽 CSA Expert 的位置(例如: "F:\PNL"), 然後點擊 [Next >] 繼續。

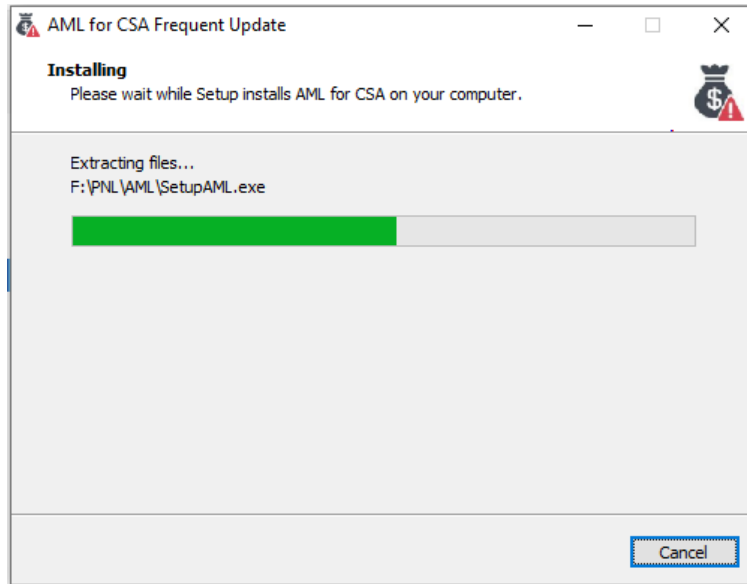


4. Ensure the program path is correct, then click [Install] to start the update program.
確定 CSA Expert 的位置後, 點擊 [Install] 啟動更新程式。

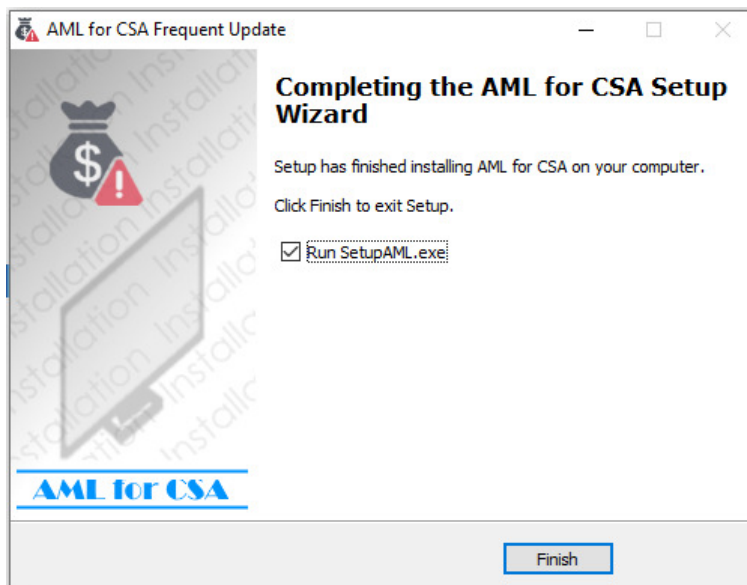


AML for CSA (1.1.0) Update Version 更新版 Procedure of Execution 執程序

5. The program update procedure may take a few minutes.
更新程序或需時數分鐘。



6. After the program is updated, click [Next] to continue the following proceeds:
程式檔案更新後，點擊 [Next] 以繼續下面程序：
 Run SetupAML.exe: Update Database
開始數據庫的更新



AML for CSA (1.1.0) Update Version 更新版 Procedure of Execution 執程序

7. The update process will continue on updating the database. It may take several minutes if you have a large database. Press [Update] to perform this process.
更新過程將繼續更新數據庫。如果你的數據庫較大，或會花較多時間。點擊 [Update] 以繼續程序

Setup AML for CSA

Setup AML for CSA (1.1.0)

CSA Serial No. CSA1234567/PNLA

Company name

User Count

CSA Data 1.49 CSA_Expert_1

CSA DB Server 127.0.0.1

CSA DB Name CSA_Expert_1

AML DB Server 127.0.0.1

AML DB Name AMLCFT_1

Connect DB Update Close

8. When the update of database is completed, click [OK] to exit.
完成數據庫更新後，按 [OK] 離開。

Setup AML for CSA

Setup AML for CSA (1.1.0)

CSA Serial No. CSA1234567/PNLA

Company name P & L Associates

User Count

CSA Data

CSA DB Server 127.0.0.1

CSA DB Name CSA_Expert_1

AML DB Server 127.0.0.1

AML DB Name AMLCFT_1

Connect DB Update Close

SetupAML

-- Update completed. Press <OK> to close. --

OK

~ End 完 ~